


A modern office desk with a light wood top and white metal frame is positioned in a room with a rustic, exposed brick wall. The desk is set up with a laptop, a notebook, and a smartphone. A black office chair is tucked under the desk. In the foreground, a white Eames-style chair with wooden legs is visible. To the left, a large window with a black frame looks out onto a brick building. The floor is covered with dark grey carpet tiles. A purple graphic overlay with a repeating pattern of geometric shapes and the word 'MANTRA' is on the right side of the image.

MANTRA



CONSTRUCTION	LOOP
PILE FIBER COMPOSITION	100% Nylon (Polyamide 6)
YARN TYPE	BCF
DYE METHOD	Solution Dyed
PILE WEIGHT	780 g/m ²
NUMBER OF TUFTS	260700/m ²
TUFTING GAUGE	1/12"
PRIMARY BACKING	Non-Woven
SECONDARY BACKING	StableShield - 100% Vinyl
OPTIONAL BACKING	Recova -PU Cushion, EcoShield -100% Recycled Vinyl
TILE SIZE	50 cm x 50 cm
PILE HEIGHT	2.5 mm / 6.0 mm
TOTAL PILE HEIGHT	8.0 mm
PILE TREATMENT	INVISTA Anti-Soil Treatment, Anti-Microbial (Optional)
RECOMMENDED INSTALLATION	Quarter Turn or Brick

SPECIFICATIONS

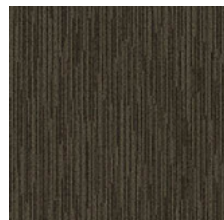
COLOURLINE



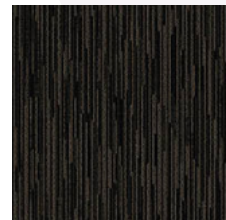
MANTRA - CC-726



MANTRA - CC-746



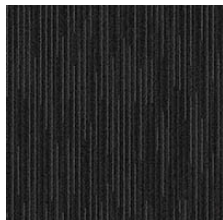
MANTRA - CC-747



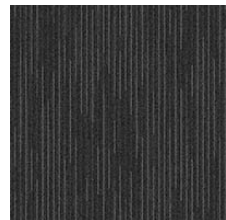
MANTRA - CC-748



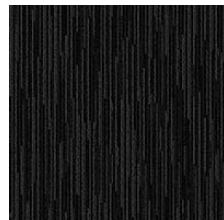
MANTRA - CC-759



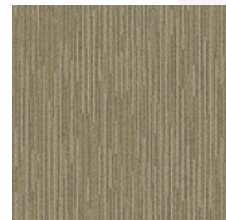
MANTRA - CC-776



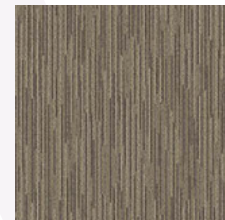
MANTRA - CC-777



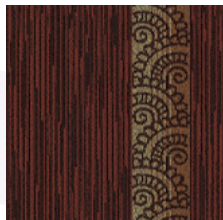
MANTRA - CC-779



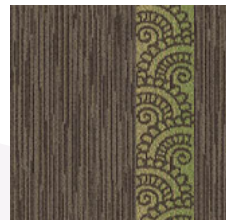
MANTRA - CC-794



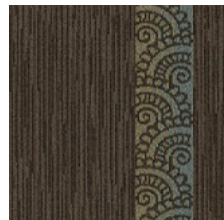
MANTRA - CC-795



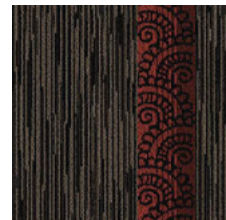
MANTRA - 726



MANTRA - 746



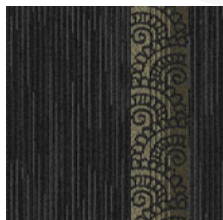
MANTRA - 747



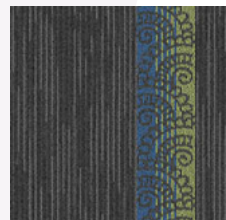
MANTRA - 748



MANTRA - 759



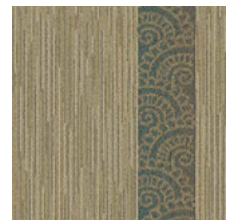
MANTRA - 776



MANTRA - 777



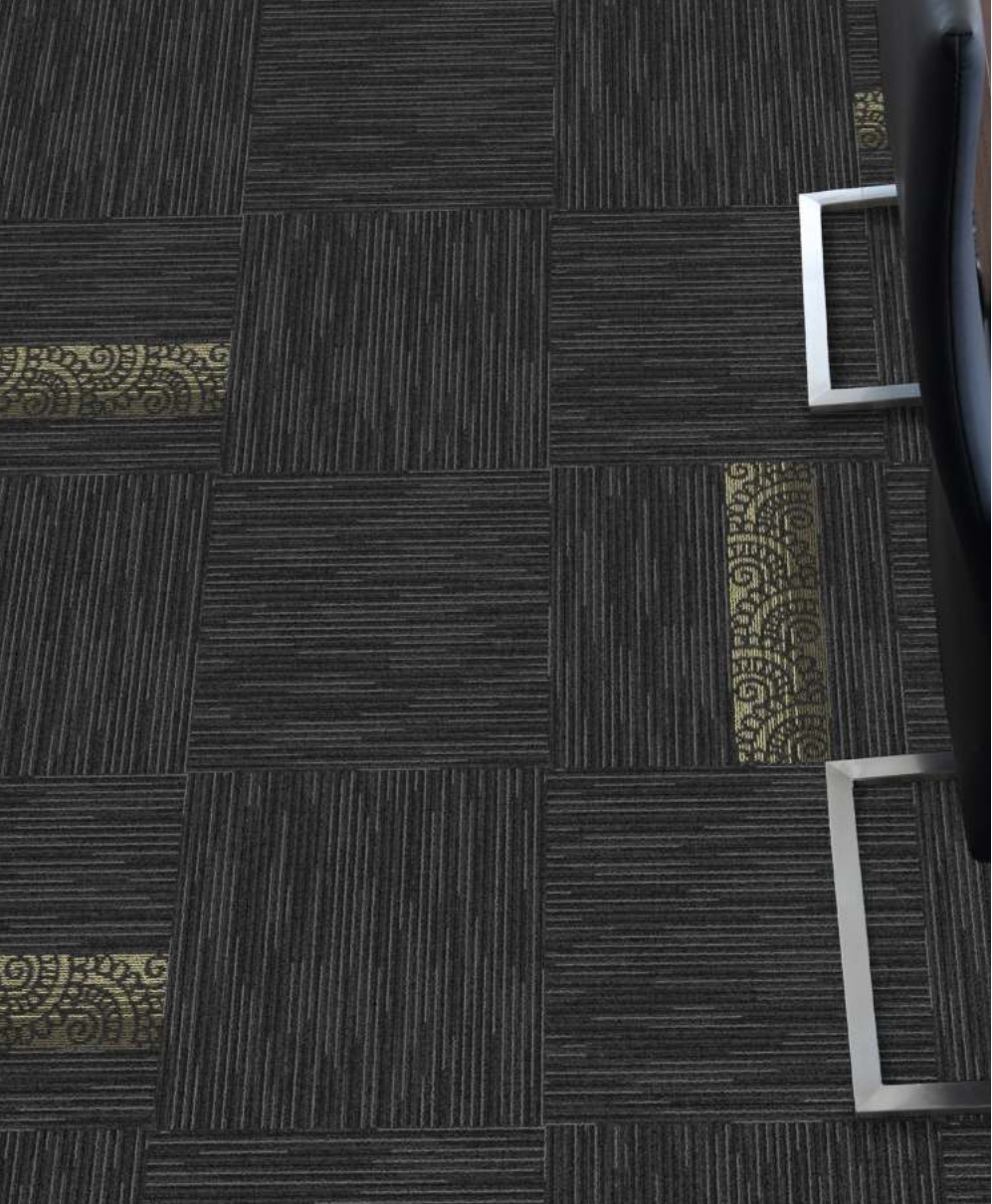
MANTRA - 779



MANTRA - 794



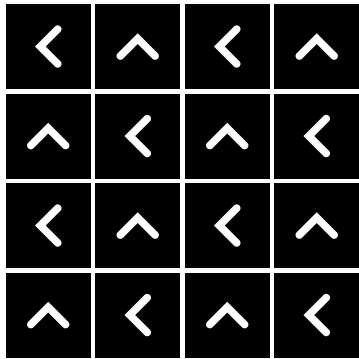
MANTRA - 795



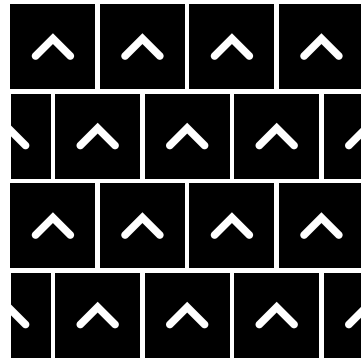


HOW TO INSTALL

QUARTER TURN



BRICK





Standard
CARPETS

www.standardcarpets.com